



**UNIVERSAL
BYTES®**

UB Church Management System™



UNIVERSAL BYTES®

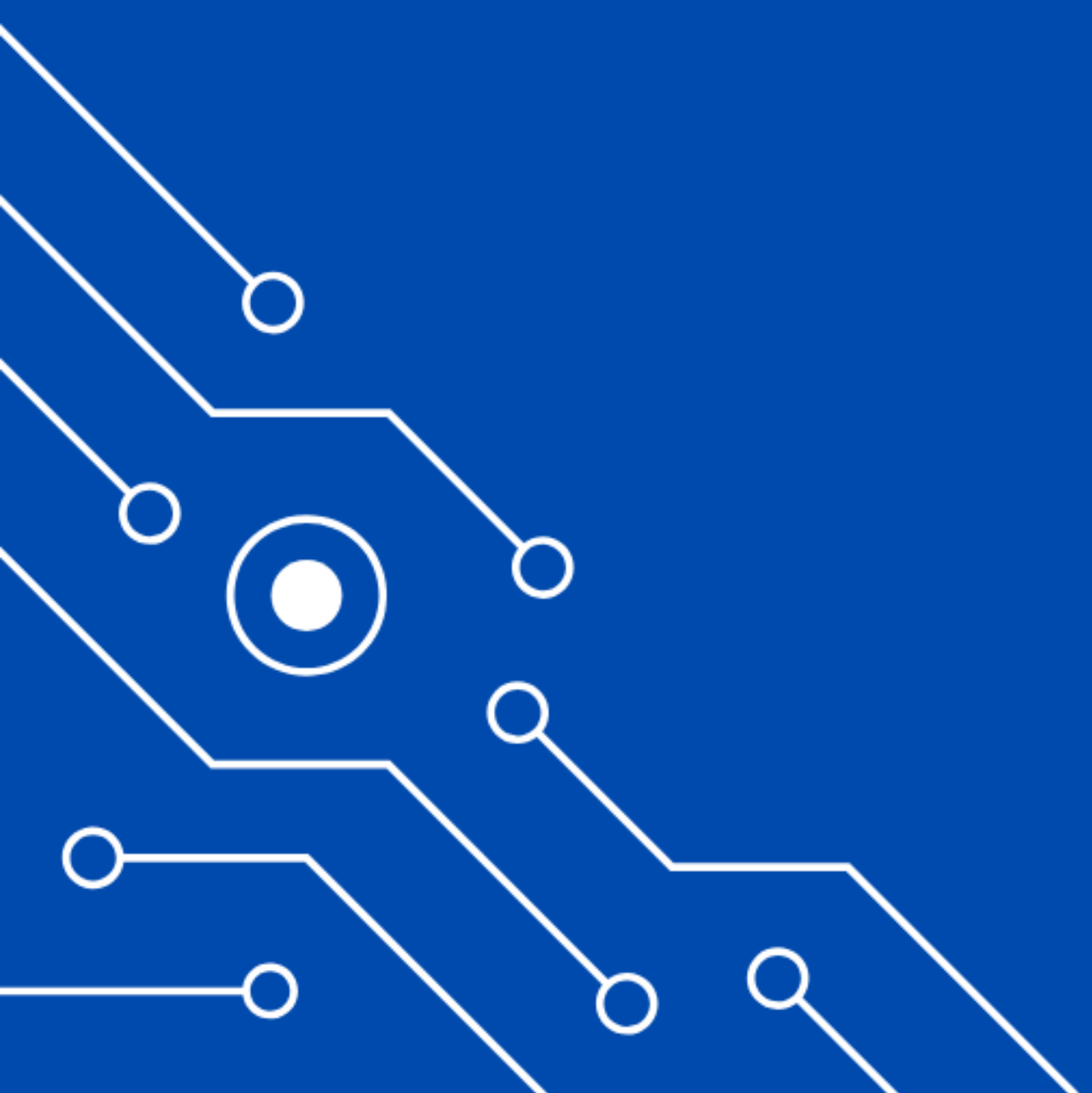
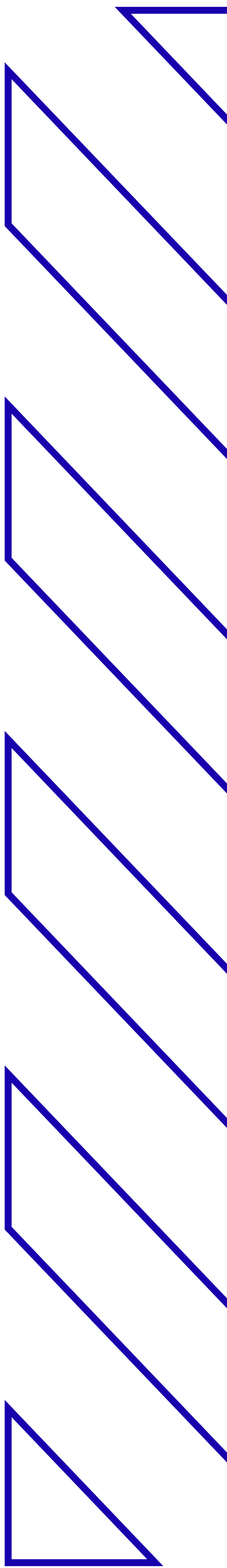




TABLE OF CONTENTS

- 1** About UBCIMS
- 2** Church Administration Challenges
- 3** System Overview
- 4** Core Modules & Features
- 5** Benefits to the Church
- 6** Implementation Approach
- 7** Contact & Next Steps



01 Introduction



Purpose of the UB Church Management System

The **UB Church Management System (UBCIMS)** is designed to help churches manage their records, administration, and daily operations in a structured, secure, and reliable digital environment. It replaces manual, paper-based processes with a centralized system that ensures church records are accurate, searchable, and preserved for the long term.

The system supports the proper management of sacramental records, parishioner information, clergy administration, documents, and church activities. By digitizing these critical records, churches are able to improve service delivery, reduce administrative delays, and protect institutional history from loss or damage.

At its core, the system exists to support the mission of the Church by simplifying administration, strengthening governance, and enabling staff and clergy to focus more on pastoral care rather than paperwork.

Who the System Is Designed For

The **UB Church Management System** is designed for churches and faith-based institutions of all sizes, from single parishes to large dioceses. It is suitable for:

- Parish offices managing membership and sacramental records
- Clergy who require controlled access to church records and reports
- Church administrators responsible for governance, compliance, and oversight
- Diocesan offices overseeing multiple parishes and departments
- Faith-based organizations that maintain structured records and documentation

The system is built to accommodate both technical and non-technical users, ensuring ease of use while maintaining strong security and data integrity standards.



02 Church Administration Challenges

Manual Records & Paper-Based Processes

Many churches still rely on handwritten registers, physical files, and manual filing systems to manage parishioner and sacramental records. While these methods have served the Church for generations, they are increasingly difficult to maintain as congregations grow and administrative demands increase. Physical records are time-consuming to update, difficult to search, and often require significant effort to verify and retrieve, especially when historical records are needed.

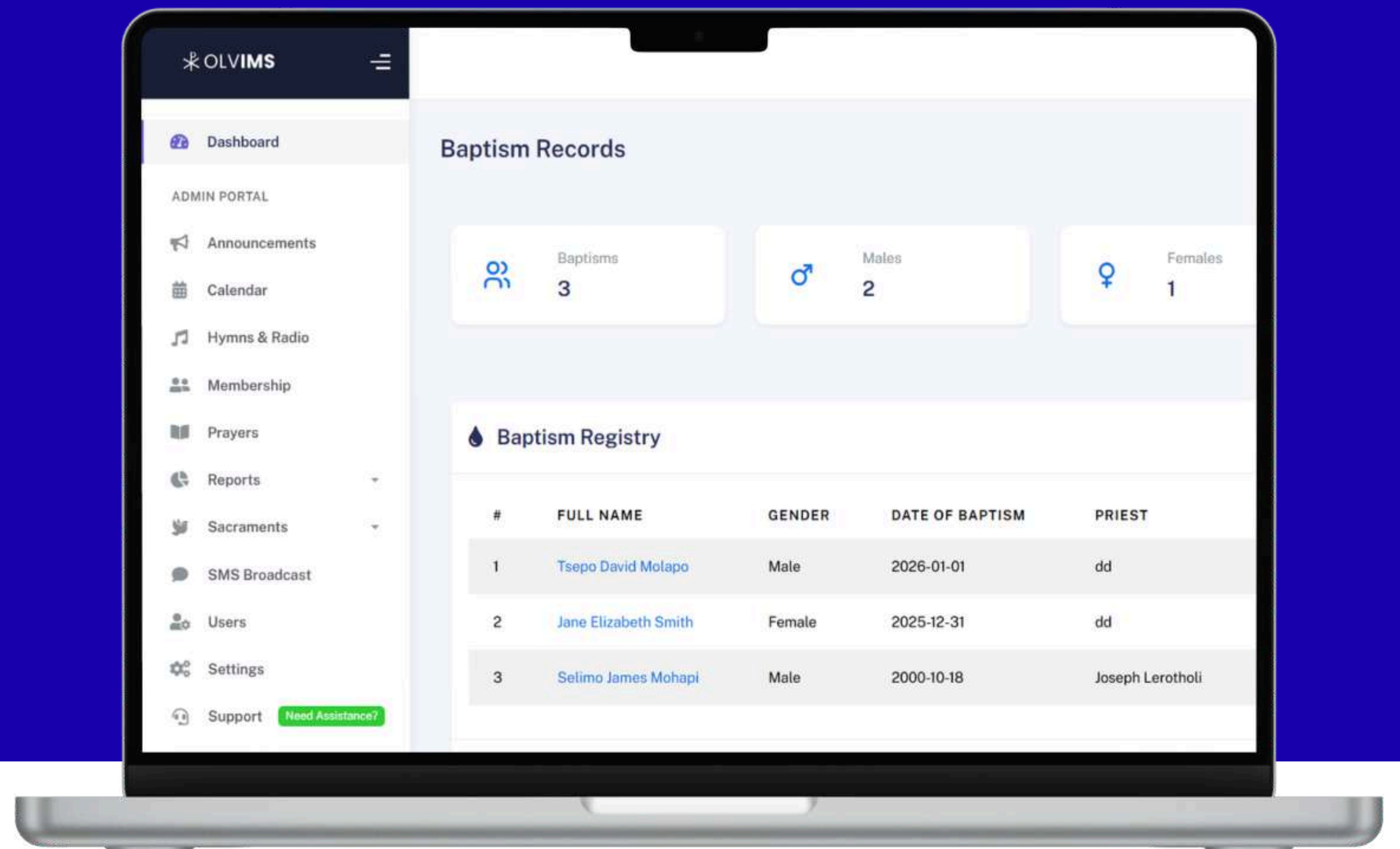
Data Fragmentation & Record Loss

Church records are often spread across multiple books, cabinets, offices, or even different parishes. This fragmentation makes it difficult to maintain a single, accurate source of truth. Over time, records may be misplaced, duplicated, damaged, or lost due to human error, aging materials, relocation of offices, or unforeseen events such as fire or water damage. The absence of reliable backups further increases the risk of permanent data loss, affecting both administrative continuity and institutional memory.

Operational Inefficiencies

Manual systems slow down everyday church operations. Tasks such as issuing certificates, confirming sacramental history, compiling reports, or responding to member inquiries can take hours or even days. Administrative staff spend excessive time on repetitive paperwork, while leadership lacks timely access to accurate data for planning and oversight. These inefficiencies limit the Church's ability to deliver services effectively and place unnecessary strain on both clergy and administrative personnel.

03 System Overview



What the UB Church Management System Does

The **UB Church Management System** provides a centralized digital platform for managing church records, administration, and day-to-day operations. It brings together parishioner information, sacramental records, clergy data, documents, events, and reports into a single, secure system that can be accessed by authorized users.

By replacing scattered physical records with a structured digital database, the system enables faster record retrieval, accurate record-keeping, and consistent administration across the church. It supports both daily operational tasks and long-term record preservation, ensuring that church data remains reliable, traceable, and accessible when needed.

Core Capabilities

The system is built around practical administrative needs and includes the ability to:

- Register and manage parishioner and membership records
- Capture, update, and retrieve sacramental records accurately
- Manage clergy, staff, groups, and church departments
- Store and organize official church documents and archives
- Track events, activities, and church calendars
- Generate structured reports and statistics for administration and oversight
- Enforce role-based access to protect sensitive information

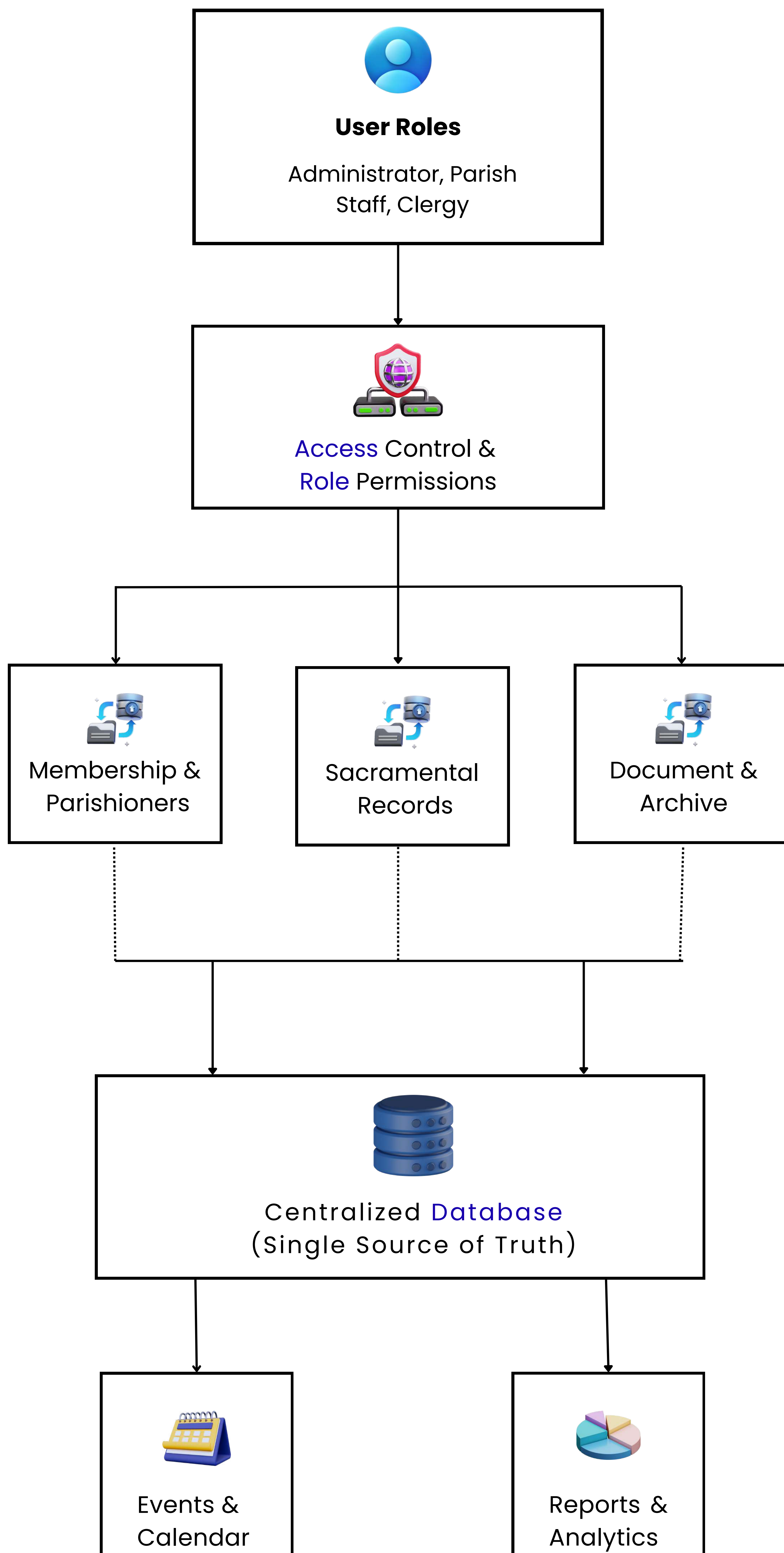
These capabilities work together to reduce manual workload, improve data accuracy, and support transparent church administration.

The **UB Church Management System** is built on a modular architecture, where each functional area such as membership, sacramental records, documents, events, and reporting operates as an independent module while remaining fully integrated.

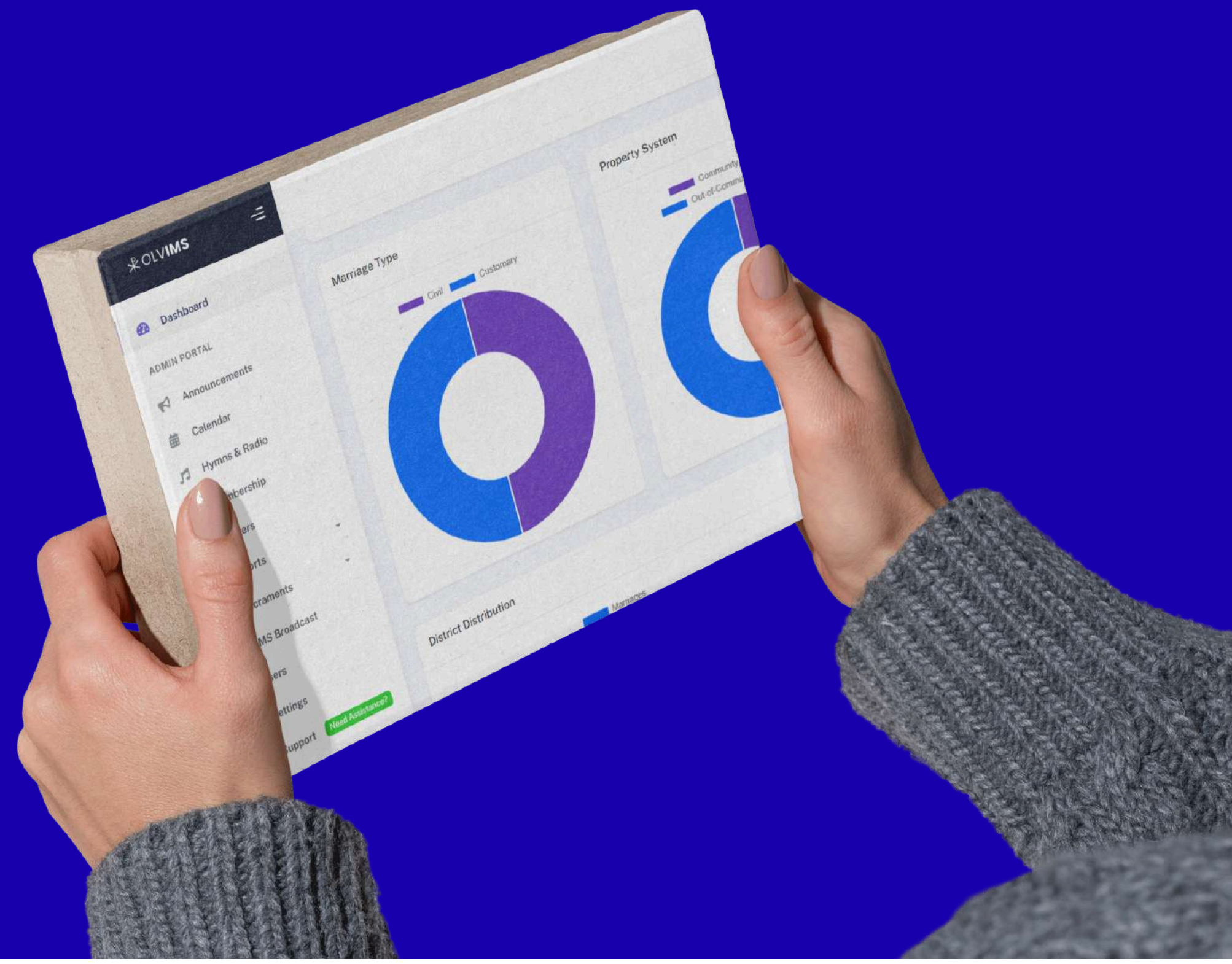
All modules connect to a centralized database, ensuring a single, accurate source of truth for all church records. Role-based access control governs how users interact with the system, ensuring that clergy, parish staff, and administrators only access information relevant to their responsibilities.

This structure supports data integrity, security, and scalability, making the system suitable for single parishes as well as multi-parish and diocesan-level deployments.

System Structure Overview



04 Core Modules & Features



Parishioner & Membership Management

This module provides a structured register of all parishioners and members of the church. It captures personal details, family relationships, contact information, and parish affiliation in a centralized database. Records are easy to search, update, and maintain, ensuring accurate membership information for pastoral and administrative use.

Sacramental Records

The system provides dedicated registers for managing sacramental records in a consistent and secure digital format. Each record is linked to the relevant parishioner, ensuring accuracy, traceability, and historical continuity.

(1) Baptism

Stores baptismal details including date, place, officiating clergy, parents, godparents, and registry references. Records can be quickly retrieved for certificate issuance and verification.

(2) Confirmation

Maintains confirmation records linked to individual parishioners, capturing essential details such as date, parish, and officiant, supporting accurate sacramental history tracking.

(3) Matrimony

Manages marriage records with complete details of both parties, witnesses, officiating clergy, and parish information, ensuring proper documentation and long-term record preservation.

(4) Death Records

Records deaths of parishioners, supporting parish registers and historical archives while maintaining respectful and accurate documentation.

Clergy & Staff Management

This module manages records for clergy and church staff, including roles, assignments, and service history. It supports administrative oversight and ensures clear accountability within church operations.

Parish, Groups & Departments

Allows the church to define and manage internal structures such as parishes, societies, ministries, and departments. Members can be assigned to groups, supporting organized pastoral activities and participation tracking.

Events & Calendar

Provides a centralized calendar for church events, services, meetings, and activities. This helps staff and clergy coordinate schedules, plan activities, and maintain visibility of important dates.



Reports & Statistics

Generates structured reports and summaries across membership, sacraments, events, and administration. These reports support planning, governance, and informed decision-making by church leadership.



Document & Archive Management

Enables secure storage and organization of official church documents, including constitutions, policies, correspondence, and historical records. Documents are digitally archived for easy retrieval and long-term preservation.





05 Benefits to the Church

Accurate & Centralized Records

All church records are stored in a single, centralized system, eliminating duplication and inconsistencies. Parishioner information, sacramental records, documents, and administrative data are maintained in a structured format, ensuring accuracy, consistency, and easy retrieval whenever records are required.

Faster Service Delivery

With quick access to digital records, routine tasks such as issuing certificates, verifying sacramental history, and responding to parishioner inquiries can be completed efficiently. This reduces administrative delays and improves the overall quality of service provided by parish offices and clergy.

Long-Term Digital Archiving

The system preserves church records in a secure digital format, protecting them from physical deterioration, loss, or damage. Historical data remains accessible for future generations, supporting institutional continuity and safeguarding the Church's heritage.

Improved Governance & Accountability

Structured data, role-based access, and clear audit trails strengthen administrative oversight. Church leadership gains better visibility into operations and records, supporting transparency, compliance, and responsible governance across parishes and departments.



06 Implementation Approach

System Setup

The system is configured to align with the church's existing administrative structure and workflows. This includes setting up parishes, departments, user roles, and access permissions. The setup process ensures the system reflects real operational needs while maintaining consistency and data security from the outset.

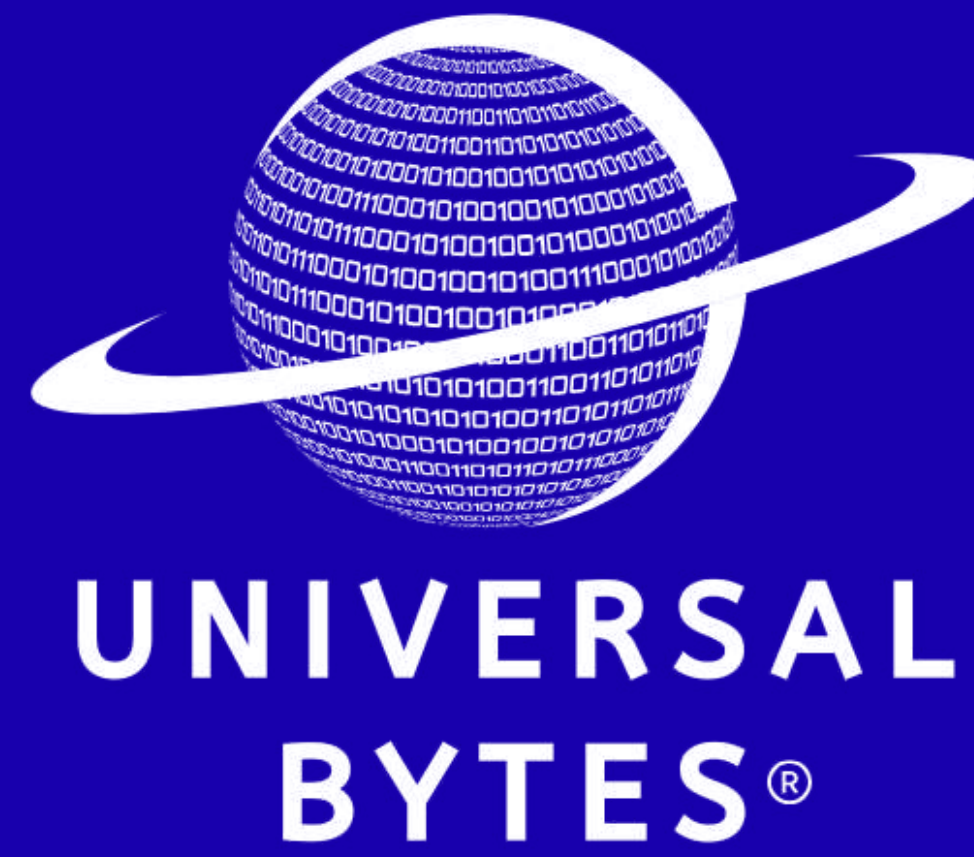
Data Digitization & Migration

Existing physical records and legacy data are carefully digitized and migrated into the system. Key information is structured and validated to ensure accuracy and completeness. This process enables a smooth transition from manual record-keeping to a reliable digital database while preserving historical records.

Training & Support

Church staff and designated users are provided with practical training to ensure confident and effective system use. Ongoing support is available to address questions, provide guidance, and assist with system updates, ensuring long-term sustainability and successful adoption.

Get In Touch With Us



The UB Church Management System can be adapted to meet the specific administrative and operational needs of your church or diocese. The next step is to engage in a discussion to assess requirements, scope, and deployment options.

Interested parties are invited to request a system demonstration, discuss implementation timelines, or explore customization options based on parish or diocesan structures.

For further information, demonstrations, or consultations, please contact:

Universal Bytes

Email: info@universalbytes.com

Website: www.universalbytes.com

Phone: +266 6269 6651

This engagement marks the first step toward a structured, secure, and sustainable digital administration for the Church.

Disclaimer & Copyright Notice

© Universal Byte Corporation (Pty) Ltd. All rights reserved.

This document and the information contained herein are confidential and proprietary. It is provided for informational and evaluation purposes only and may not be reproduced, distributed, modified, or transmitted, in whole or in part, without prior written consent.

The Church Management System described in this document is subject to ongoing development. Features, functionality, and specifications may change without notice. This document does not constitute a binding agreement, contract, or guarantee of service.

Unauthorized use, duplication, or misrepresentation of this material may result in legal action in accordance with applicable intellectual property laws.